

LepreCon 12

May 29 - June 1, 1986

Progress Report



FROM THE CHAIR

We are all looking forward to a great LepreCon. We hope you are too.

Terry Gish

GUESTS

We of Leprecon feel we have an outstanding slate of guests to offer our members this year.

Kim Poor, our Artist Guest of Honor, is one of the county's outstanding astronomical artists. His work has been an Arizona and national favorite for years. His airbrush style is considered by many to be the best available. He works with L-5 news as art editor and has done cover work. OMNI has published several of his planet scapes and space scenes.

Jo Clayton, our Author Guest of Honor, is the author of the DIADEM series and the DUEL OF SORCERY series for DAW Books. Jo enjoys fans and parties and is easy to talk to so be sure to enjoy her company if you get the chance.

Peggy Crawford, our Fan Guest of Honor, along with her late husband, Bill, has run Fantasy Faire and Science Fiction Weekend in Los Angeles.

Jennifer Roberson a local author will serve us as a special DAW representative.

Paula Crist, professional stunt woman, will also be coming to do a seminar on role playing. If everything works as planned she will also be organizing some role playing during the convention.

Unfortunately it looks very much like Don and Elsie Woolheim will not be able to attend due to health problems. While Don is improving a long plane trip seems to be out of the question.

REGISTRATION

Membership rates are currently \$17 (through May 1) and will be at least \$20 at the door. Children's rates are currently \$5 for children 5-12 and will be \$8 at the door when accompanied by an adult. Children over 12 will considered to be adults, and children under 5 will be free (in tow). Kids "in tow" not "in tow" will be charged at full adult rates. One day memberships will be \$12 Thursday evening and Friday, \$10 Friday only, \$14 Saturday, and \$7 on Sunday.

Registration will be open in our hospitality suite Thursday night from approximately 7 pm. until 9pm. and then reopen Friday from 10 am. until 8 pm. Saturday hours will be 9 am.-6pm. on Sunday we may or may not be open depending on demand. After regular hours memberships and badges will be available in operations.

I.D. must be presented at Registration to pick up adult badges (allows you to drink). Any badge changes at the convention will be charged \$1.

Clarence Stillwell

HOTEL

Our hotel for LepreCon 12 is the Ramada Inn Airport/North, 3801 East Van Buren. Their phone number is (602) 275-7878. They have offered us outstanding rates for LepreCon this year. Rooms will be \$39 per night for single, double, triple, or quad occupancy. Suites are available at \$65 per night. Reservations are already arriving at the hotel, so reserve early to be in the convention block. Reservation cards are included in this P.R. If you want a suite it is especially important to reserve early as there is a limited number available and the convention itself will be using several.

The hotel has a courtesy van from the airport for those of you arriving by air. There is no charge for this, although a gratuity is encouraged.

Please note that no members reservation will be made by the convention. The only reservations we will make are for our guests and committee.

SECURITY

Security team are made up of people who are willing to give up some of their time to help ensure the convention is a success. To help us do our jobs, we have established some rules.

No real or realistic looking firearms are allowed at the con. We are looking to keep this convention hassle free, so we request that you do not bring them. Also spiked apparel may not be worn or carried.

Swords and other bladed weapons may be carried, but they must be in a "hard protective" covering. This covering must be sufficient to protect anyone from the edge or point.

Since this hotel is an open court yard style hotel, please remember that the walkways are just like hotel halls. Please treat hotel property and other members and hotel guests with respect, no running or horse play on the walks.

We reserve the right to revoke memberships for serious infractions. Warnings will be issued for less serious matters, but two strikes and you are out. Memberships so revoked will not be refunded. We wish to enjoy this convention as much as anyone else and with your help, we will

For anyone interested in joining the security team there will be an organizational meeting (party) at the hotel sometime near the convention. Please call me to get the exact date and time and to let me know you are interested. Call:

Eric Hanson
(602) 973-3773 after 6:30 pm.

Eric Hanson

Yes, it seems that LepreCon is going to be a Gamey Convention. These things are not planned, they just seem to happen - at least they seem to happen to this programmer

Have you ever hit a rolled up hedgehog with a stiff flamingo (unlike Alice - her flamingo was limp)? Or putted like Trolls probably did? Or throw Unicorn shoes? LepreCon12 will be your BIG chance. There will be sign-up forms at the Registration Desk. There may even be rules - or the rules may change as play goes on - it depends on the whim of the Red Queen.

Instead of playing you'd rather be an official - we need those as well as players.

Along with the above games (which will be played out-of-doors) indoors we will have Trivia and Fannish Feud (Family Feud style). Both for teams or individuals.

We have gotten Kim Poor to 'teach/demo' air brush techniques. Sign up for this AS SOON AS POSSIBLE. Drop us a card at the P.O. Box if you're interested. This will have a limit of how many people Kim can help. Probably a three hour session. So grab your air brush, paints, canvas, shirts, canvas boards, etc. Kim will provide the compressor and fittings. LepreCon will provide some paints and paper. You need your own air brush.

And just MAYBE we can do a Pagan Religions 'seriously' this year. Who knows, we may do this every year. There is a lot to cover.

Of course, there will be panels (on writing, reading, stunts, art, selling, agents, NASA, and things not yet thought of), parties, video room, war gaming, taste testing of nummies, parties, costumes (how and why), masquerade, parties, animation films, animation panels, experimental films, chances to get your picture taken with 'Dr. What', and 'Readings' at odd times of the day and night.

And if all of this doesn't touch some area of interest for you - do let us know - we'd like to cover all areas. Maybe not last or even least there will be a 'Fight' done by the SCA sometime during the con in full battle dress or costume. And, since Paula Crist is also coming look for lizards galore.

Doreen Webbert

PUBLICATIONS

Ad rates for this year's program book are \$35 per full page, Pro and \$25 per page, Fan. Half pages are \$20 and \$15 respectively. Page size is 7.5 inches X 5.25 inches (or 8.5 X 11 minus .5 border). All ads should be submitted camera ready by May 1. Multiple page discounts are available. Any question should be addressed to Terry Gish (602) 839-2543 after 6 pm. or Clif Baird (602) 968-5749.

GOT A MINUTE?

GOT A FEW?

At the convention, how many times do you walk through the art show? How many times do you sit in the con suite? How often do you go to the dealer's room? How much programming do you go see?

These activities are all part of a convention. Every time you visit these places you see something new. However, how many times do you sit down with your friends at a convention and lament that there is "nothing to do"?

Contrary to popular belief there always is plenty to do at a convention.

A convention is a place to share a common interest. A place to meet people and share ideas. One of the easiest ways to meet new people is while sharing a work load. (I've met lots of people while chopping vegetables in the con suite.)

If you're interested in meeting people while working, drop by the volunteer office, or if you just want to tell me to stop writing long-winded, obnoxious articles, then drop by anyway.

Sam Stubbs



MASQUERADE

We had an excellent turn out at last year's masquerade with thirty contestants and a full house. We hope to do even better this year with your support and participation. The competition will be divided into two sections, Children's Masque and Adult Masquerade with both sections eligible for the Best of Show Award. The prizes include hand-tinted, original art scrolls and other awards still being considered. We hope to see everyone at what we feel will be an enjoyable evening.

Masquerade this year will be in the 2/3 of the Ramada Ballroom which has built in stage and track lighting. This should make the Masquerade more enjoyable for everyone. Masquerade forms will be available at the information desk. There will be a run through of the masq sometime Saturday.

HALL COSTUMES

Hall costume awards will be distributed on Friday and Saturday with a break from 8:30 to 10:00 for the Masquerade on Saturday. Interested persons can show their costumes at the Masquerade Information Desk located in the Art Show.

Rikki Winters

ESCAPE TO...

THE READERIE

27 E. SOUTHERN

TEMPE, AZ 85282

PH. (602) 968-7790

- NEW & USED S.F. & FANTASY
- COLLECTOR'S COMICS
- DUNGEONS & DRAGONS
- TRAVELLER
- BACK ISSUE S.F. ORIENTED
MAGAZINES
- PORTFOLIOS
- DOCTOR WHO
- AND LOTS MORE !!



[illegible]

TRIVIA CONTEST

LepreCon will feature (once again) the most trivial contest that can be held. Yes that foofaraw known as the TRIVIA CONTEST. This year there will be, in addition to the style of questions you have come to know and love???, some features taken from the BEST??? of the TV game shows (how was that again).

The contest will be designed arond teams of up to four players (if someone thinks that they are knowledgable, smart, fast, egotistical enough they can enter as a one person team. Teams of two or three are also OK).

The contest is curently planned to be held in two (maybe more) parts if enough teams enter. It will be played as a single elimination event, that is two teams play against each other with the winning team advancing to the next round. There will be prizes for at least the top team (as well as some others if I can con enough money out of the con).

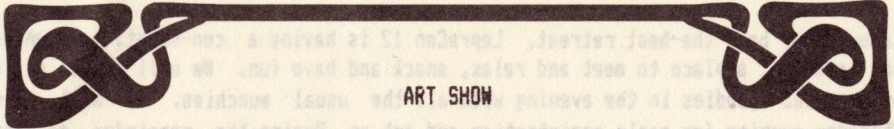
Questions will be taken from many areas of fandom but I am issuing a plea, a request, a pleading for other people to submit questions for the contest. I and most of the other people whom I have so far been able to bully into submitting questions specialize in hard Science Fiction. This causes a scarcity of questions about the Doctor, the works of H. P. Lovecraft, Elfquest, and the myriad of other areas which are deserving of at least token attention (if not a major effort). What this means is IF YOU WANT YOUR FAVORITE AREA TO GET ITS PROPER ATTENTION RATHER THAN BEING SLIGHTED you will subit questions to be used in the contest (Yukk that sounds a lot like work). I will accept as few or as many question as you want to submit. Also submitting questions will not disqualify you from entering the contest since if someone subits so many as to throw the number of questions in their favor (fat chance, round eyes) some of them will be saved for use in future contests (there's always a next year or a NASFiC, whichever comes first).

So by working together we can make the subjects the ones everyone wants instead of the ones that I want. For more information on question submissions please contact:

Doug Cospier
3120 N. 65th Drive
Phoenix, AZ 85033
(602) 849-3338

(Some peope can sure make a big thing out of trivia) (You can say that again, ed.)

Doug Cospier



ART SHOW

Another great art show is expected for LepreCon 12. It will be in the Colonade Room. Set up will start no later than 9 am. Friday morning (maybe 7 pm. Thursday night) and the show will open no later than 1 pm. Friday and will remain open until 8 pm. Saturday's hours will be 10 am. to 6 pm. Sunday we will be open one hour for last minute bidding from 10 am. until 11 am. The art auction will be 1 pm. Sunday.

In addition to the usual art for sale. This year will be the premier showing of the LepreCon, Inc. permanent collection. It is planned to include pieces from each of our past Artist Guests of Honor, and Kim Poor. The piece from Lela Dowling is already here and is wonder-filled. Be sure to drop in and see it.

Another feature of this year's show is the addition of an artist dealer area within the artshow itself. You won't have to go searching for the artist dealers they will be right there.

Buyer and Artist check out will start at 3 pm. Sunday. (MasterCard and Visa will be accepted for art purchases.) There will be a 5% surcharge on all art sold. However, a 5% discount will be given for cash or checks.

Art show rules and forms are available with an S.A.S.E. to our P.O. Box.

Any other questions or art work shipped in should be addressed to Ray Gish, 4424 S. Stanley Pl., Tempe, AZ, 85282.

All in all we expect a great show. Be sure to save your pennies.

Ray Gish

VIDEO

We have decided to go almost exclusively with video this year. The reasons for this are the availability of more up to date material on tape and the ease of projection. An outstanding Video program is planned with some very recent movies plus special interest videos.

If there is anything special you would like to see let us know. We will see what we can do.

Wayne West

BEAT THE HEAT CON SUITE SWEET

Come to our beat-the-heat retreat. LepreCon 12 is having a con-sweet. Brownies and lemonade, a place to meet and relax, snack and have fun. We will serve extra and unusual goodies in the evening with all the usual munchies. We will open Thursday evening for early registration and set up. During the remainder of the convention we will open between 9 and 10 a.m., early birds will be volunteered. Of course we will be closed during the masquerade but at other times we are sponsoring some special events. A continental breakfast will be available Sunday morning for a small fee (\$1.00 or so), first come first served. Shadrick and I are looking forward to putting hospitality back in the hospitality suite. See you there, come ready for fun.

Zetta Konrardy

GAMING

This is it- the BEST gaming in the known and unknown universes! Four big rooms, including one on the ground floor. Come and enjoy: our usual HUGE collection of check out games, including TALISMAN, AXIS & ALLIES, TALES OF THE ARABIAN NIGHTS, SUPREMACY, ALL-STAR WRESTLING, and many, many more of your favorites...Computer Gaming...an exciting used game auction on Sunday...CHAMPIONS, FANTASY HERO, and JUSTICE, INC. ...Roderick the Sly's ARENA OF DEATH! ...a live murder mystery...a Weird War miniatures tournament...PARANOIA...lots of prizes...and much, much more.

Remember all the fun we had last year? Well, this year is going to be even better. To make it so, I need DM's and referees of all kinds. Don't hesitate to contact me - Don Harrington, 3505 E. Campbell #14, Phoenix, AZ, 85018, (602) 956-1344 (before 10 pm. please), and we'll see you all at the convention for some good gaming.

Don Harrington

LepreCon, Inc

Many of you do not realize that when you buy a LepreCon membership you are not just paying for the right to attend the convention. You are buying a membership to the corporation. It also gives you the right to become a voting member of LepreCon, and help all of us choose the members of the Board of Directors. If any of you are interested in becoming more involved in the operation of the corporation don't hesitate to look up any of our current directors or voting members. If you don't know who they are JUST ASK. Most of this year's staff are.



WesterCon Bid

As many of you know there is a WesterCon Bid in progress for Phoenix in 1988. It is being supported by both LepreCon, Inc. and C.A.S.F.S. the sponsors of CopperCon. In order to bring the convention to Phoenix we of LepreCon encourage you to vote for the bid. In order to do this you must be at least a supporting member of the 1986 WesterCon in San Diego. To help you to do this we will be selling supporting and attending memberships to San Diego and voting memberships to the 1988 WesterCon at LepreCon. If any of you have attending memberships to San Diego that you are not intending to use please let us know and we will try to find a good home for them. If any of you want more information on the bid, please feel free to call Terry Gish at (602) 839-2543 after 6 pm. All volunteers, support, and contributions gratefully accepted.

DEALER'S ROOM

The Dealer's Room is currently sold out. The room contains lots of your old favorites plus some newcomers. Look forward to seeing you there.

David Hiatt

LADERA TRAVEL

"For all your travel needs"



Call

1-800-624-6679

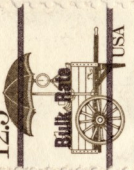
(outside California)

contact

Rick Foss or Robin Schindler
2041 Rosecrans Ave. no. 103
El Segundo, Ca. 90245
(213) 640-0527

Pushcart 1880s

125



LEPRECON

P.O. BOX 16815
PHOENIX, ARIZONA
85011

