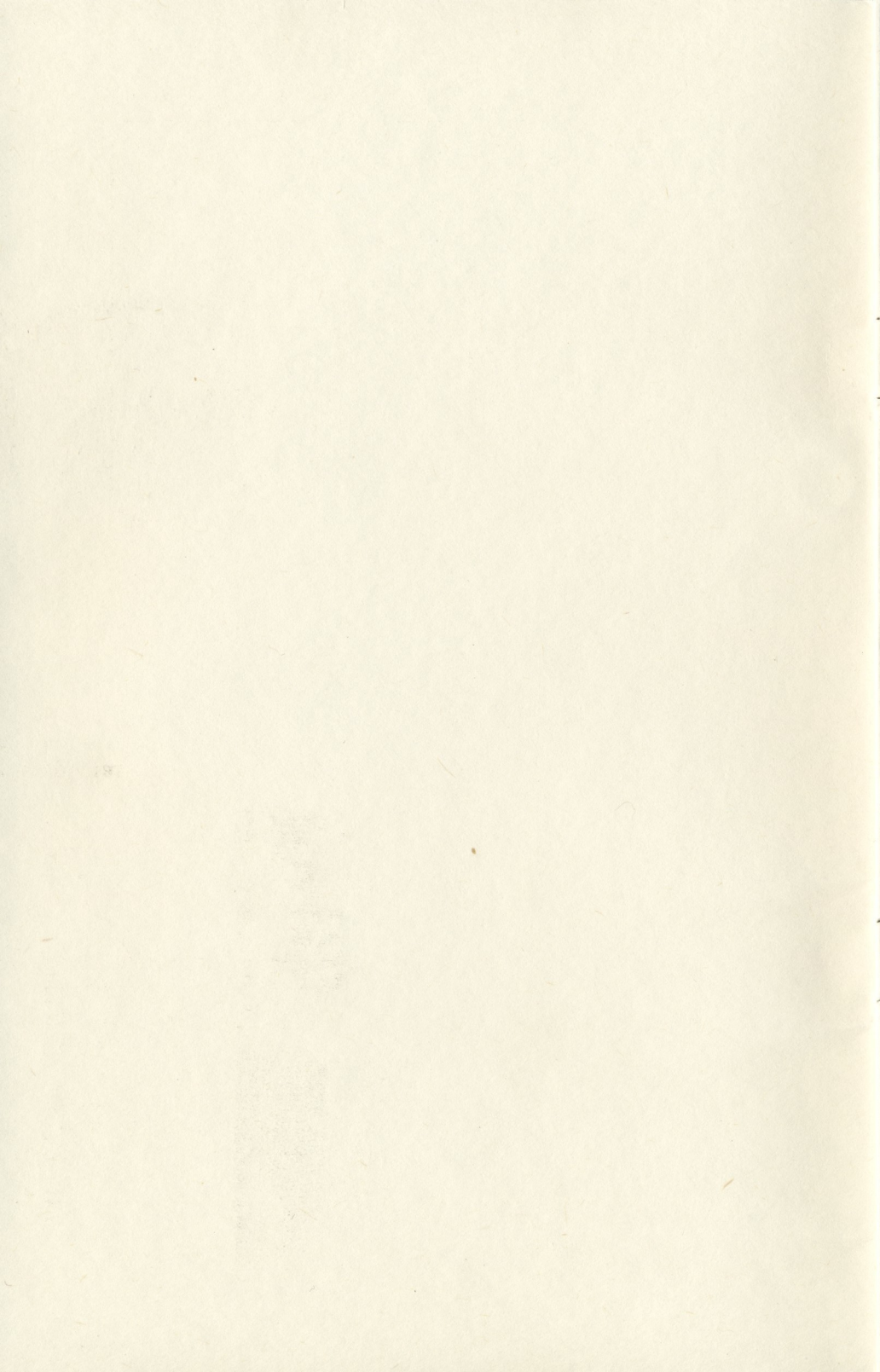




# CONTACT

CULTURES OF THE IMAGINATION



# CONTACT VII



**March 1-4, 1990  
CARAVAN INN  
Phoenix, Arizona**

**sponsored by...**

**CONTACT, INC.  
and  
THE CENTRAL ARIZONA  
SPECULATIVE FICTION SOCIETY, INC.**

## Welcome to Contact VII

**CONTACT** is a national academic conference which brings together some of the nation's foremost scientists, science fiction writers and artists to exchange ideas, explore possibilities and stimulate new perspectives about humanity's future. Our goal: To encourage serious and creative interdisciplinary speculation guided by the principles of science.

Each year we meet at **CONTACT** to promote the integration of human factors into space age research and policy, emphasize the interaction of the Arts and Sciences and their technologies, and develop ethical approaches in cross-cultural contact, whenever and wherever it occurs.

**SYMPOSIA:** Interdisciplinary forums in which professional scientists, writers and artists present scholarly papers for publication and for discussion with the audience.

**THE BATESON PROJECT:** A seminar of invited experts each year addresses a selected topic of academic and public interest relating to our future on Earth or in space.

**CULTURES OF THE IMAGINATION:** An experiment in creation - participants design an integrated world, alien life form and culture, and simulate contact with a future human society.

**WORKSHOPS:** Educational mini-courses directed by professionals provide theoretical background and "hands-on" experience in world construction, bioform design, culture building, inter-cultural contact, etc.





## GREGORY BATESON

Even during the earliest stages of planning several years ago for a conference linking speculative anthropology with speculative fiction, it seemed clear that the guest of honor should be University of California Regent and teacher Gregory Bateson. Anthropology claimed him because his focus was ever on the human being. But no single discipline could circumscribe his intellect. His early commitment to the natural sciences was basic to anthropology but also to psychiatry, communications, cybernetics, and perhaps some fields that as yet have no names. His range of interest is illustrated by his major works: Naven; Balinese Character: a Photographic Analysis; Communication: the Social Matrix of Psychiatry; Steps to an Ecology of Mind and Mind and Nature.

As a scientist, he showed a genius for abstracting principles from data. As an academician, he challenged intellectual complacency and mediocrity whenever he found them. And, in his wake, he left expanded perspectives. Though his death on July 4, 1980 has made it inconvenient for him to join us in person, his tradition of exploring possibilities and stimulating ideas is still with us. He has led us to a more comprehensive vision of our place in nature and what it means to be human. Thus, it is to Gregory Bateson that CONTACT is respectfully dedicated.

# CONTACT VII

## SCHEDULE OF EVENTS



### THURSDAY EVENING

9:00-10:00PM Prologue: Briefing Meeting  
(for Program Participants)  
BALLROOM I

### FRIDAY

10:00-10:30AM Welcome and Introduction to CONTACT VII  
- Funaro  
BALLROOM I

10:30AM-4PM SOLSYS COUNCIL MEETS IN OPEN SESSION  
BALLROOM II

10:30AM-4PM COTI MEETS IN OPEN SESSION  
ROOMS 100,102,104,106,108

AS NEEDED MARS COLONY MEETINGS  
BONANZA ROOM (2nd floor)

10:30-NOON Symposium 1: SIMULATIONS FOR THE  
FUTURE - Panel - Funaro, Neville, Riner  
BALLROOM I

1:00 - 2:30PM Symposium 2: NEAR FUTURE MISSIONS IN  
SPACE Panel - Harrison, Zane, Beach  
BALLROOM I

2:00 - 4:00PM Workshop 1: COMPUTER GRAPHICS - Joel  
Hagen  
COFFEE SHOP

2:30 - 4:00PM Symposium 3: FUTURES RESEARCH METHODS  
Panel - English-Lueck, Riner, Tough  
BALLROOM I

4:00 - 4:15PM SOLSYS COUNCIL  
(Daily Presentation)  
BALLROOM I

4:15 - 5:00PM CULTURES OF THE IMAGINATION  
(Daily Presentation)  
BALLROOM I

SATURDAY

9:00AM-11AM SOLSYS COUNCIL MEETS IN OPEN SESSION  
BALLROOM II

9:00AM-11AM COTI MEETS IN OPEN SESSION  
ROOMS 100,102,104,106,108

AS NEEDED MARS COLONY  
BONANZA ROOM (2nd floor)

9:00 - 11:00AM Workshop 2: HUMAN/MACHINE LANGUAGE  
- Brown  
COFFEE SHOP

9:30 - 11:00AM Symposium 4: VISIONS OF THE FUTURE  
Panel - Reybeck, McMahon, Victor  
BALLROOM I

11:00-11:15AM SOLSYS COUNCIL  
(Daily Presentation)  
BALLROOM I

11:15 - NOON CULTURES OF THE IMAGINATION  
(Presentation)  
BALLROOM I

2:00 - 5:00PM SOLSYS COUNCIL MEETS IN OPEN SESSION  
BALLROOM II

2:00 - 5:00PM COTI MEETS IN OPEN SESSION  
ROOMS 100,102,104,106,108

2:00 - 3:30PM Symposium 5: ALIENS, INSIDE AND OUTSIDE  
Panel - Funaro, Woodson, Hagen  
BALLROOM I

3:30 - 5:00PM Symposium 6: HUMANITY IN THE SPACE AGE  
Panel - Rohatyn, Stovitz, Tough  
BALLROOM I



5:00 - 6:00PM CULTURES OF THE IMAGINATION  
(Presentation)  
BALLROOM I

SUNDAY

NOON - 1:00PM Bateson Project: SOLSYS COUNCIL  
SUMMARY  
BALLROOM I

1:00 - 3:00PM CULTURES OF THE IMAGINATION: CONTACT  
BALLROOM I



CONTACT VII/90  
SYMPOSIA/WORKSHOPS

1. **Simulations** - Panel: James J. Funaro, Melvin K. Neville, and Reed D. Riner

2. **Near Future Missions in Space**

Albert A. Harrison - Psyching Up for Mars: Lessons from 1000 Days Nonstop at Sea

Thomas L. Zane & Eric L. Carlson - Mission to Mars: Potential Social/Psychological Limitations and Strategies for Crew Preparation

Scott Beach - Results: CONTACT VI Space Settlement Survey

3. **Futures Research Methods** - Panel: Jan English-Lueck, Reed D. Riner, and Allen Tough

4. **Visions of the Future**

Douglas Reybeck - Communities of Interest in 2040

Robert F. McMahon - The Great Interstellar Commission

Laurence J. Victor - Adventures of Gaia



## 5. Aliens, Inside and Outside

James J. Funaro - The Alien Metaphor: Extraterrestrial and Intraterrestrial Contact

Mary Clare Woodson - The Human-Dolphin Connection: Alien Contact on Earth

Joel Hagen - Computers: Aliens of Our Own Device

## 6. Humanity in the Space Age

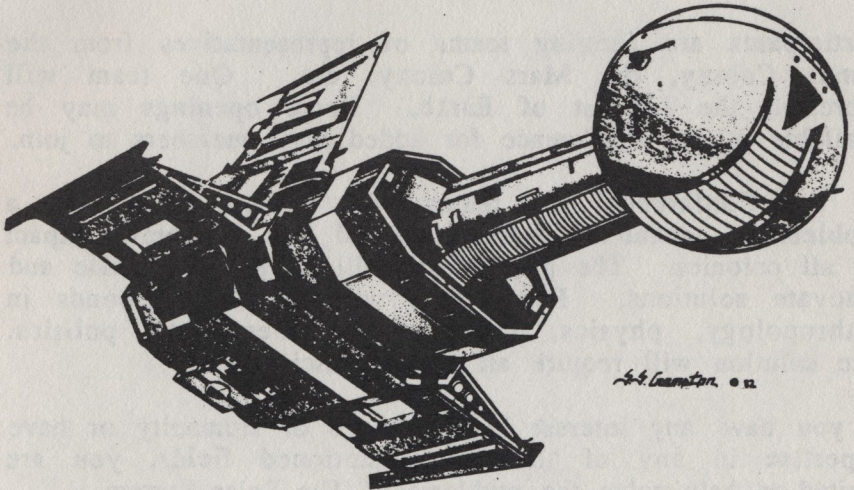
Dennis Rohatyn - The Quest for Uncertainty: Why Go into Outer Space?

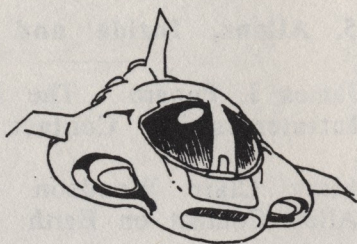
Chuck Stovitz - Laws, Aliens and the Constitution

Allen Tough - The Long-Term Effects of REAL Contact

## CONTACT VII/90 WORKSHOPS

1. COMPUTER GRAPHICS - Joel Hagen
2. HUMAN/MACHINE LANGUAGE - James Cooke Brown
3. FUTURES RESEARCH METHODS - Reed D. Riner





## BATESON PROJECT

### THE SOLAR SYSTEM COUNCIL

*It's 2050 AD: Do You Know Where Your Great Grandchildren Are?*

The Solar System Council is, like COTI, a role-playing scenario in which the participants interact to solve a problem. The problem concerns interplanetary diplomacy set in the year 2050.

The scenario, which is being designed on the BIX computer network, is a model which describes Humanity's emergence into space and colonization of the Moon, Mars, some asteroids and the L-5 points. A fairly detailed model of the population, history, economics, social interactions, technology and politics of each colony is being developed.

Participants are forming teams of representatives from the Lunar Colony, the Mars Colony, etc. One team will represent the interest of Earth. Some openings may be available at the Conference for added team members to join.

At the Conference, the teams will be presented with a problem of technical, political, social and economic impact on all colonies. The participants will have to negotiate and innovate solutions. Participants will have backgrounds in anthropology, physics, letters, management and politics. The solution will require all of the disciplines.

If you have any interest in the future of Humanity or have expertise in any of the above-mentioned fields, you are invited to help solve the problems of The Solar System.



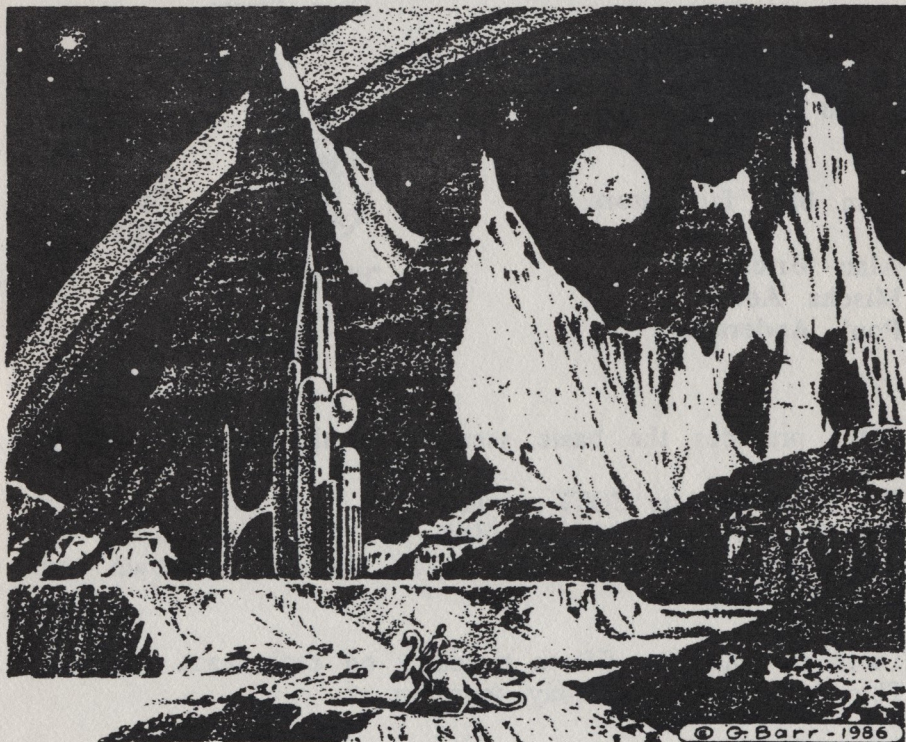
L-5 Team:  
William O. Wright  
Daniel McIntosh

Earth Team:  
Rick Cook  
Paul Schauble

Unattached:  
Greg Barr  
Bede (Bruce D. Arthurs)  
Barbara Clifford  
Ken Durham  
Ken Harmon  
Hilde (M. R. Hildebrand)  
Peter L. Manly  
Jill Mayer  
Michael McCollum  
Earl Mincer  
Dan Smith (and lackeys)  
Roger Smith

Luna Team:  
Henry Vanderbilt  
Alastair Mayer  
Aleta Jackson

Mars Team:  
Reed Riner  
John Thiesen  
John Crane  
...plus 30-some students



# COTI

## Cultures of the Imagination

### AN EXPERIMENT IN IMAGINATION

Two groups of contestants participate in COTI. They cloister themselves in separate rooms and create intergrated world systems. These systems range from cultural modes to alien life forms and from probable cultural objects to just-barely-possible artifacts. Cultures of the Imagination culminates in encounter Sunday afternoon when the two separately created worlds make contact.

This year's COTI Servants:

Barbara Joans (moderator)

resident experts...

team red facilitators...

Joel Hagen  
Nolan Le Blanc  
Chip Street

Sandy Stone  
David Forster  
Karen Andersen

team blue facilitators...

Alan Bricklin  
Mischa Adams  
Poul Andersen



"Ritual Objects"

COTI provides the basic scenario at the beginning of the conference...

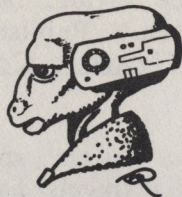
The background is COTI provided -

The cultures are TEAM provided -

The contact ENCOUNTER is always unknown and unknowable.

There is space for fifteen members on each team. Sign up Thursday night or Friday morning.

JOIN US !!



## PROGRAM PARTICIPANTS

**MISCHA ADAMS** is a freelance ethnographer and currently serves as a Vocational Counselor in Santa Cruz, CA. A lifelong science fiction fan, Mischa also writes, and recently published a SF story in *WOMEN IN SEARCH OF UTOPIA: MAVERICKS AND MYTHMAKERS*, edited by Ruby Rohrlick and Elain Baruch.

**KAREN ANDERSON** is a writer, editor, and well-known personality in the science fiction community. Among her areas of expertise are mythology, ancient histories and cultures (human), and the ferreting out of exotic recipes. She speaks and writes several languages including ancient and modern Greek.

**POUL ANDERSON** is one of the world's most prolific, respected, and honored writers of science fiction and fantasy. Winner of 6 Hugo Awards and 2 Nebulas, he has written over 50 novels and novelettes, and hundreds of shorter pieces which range from "hard" SF to heroic fantasy.

**GREG BARR** holds a lifelong interest in science fiction and space development. This interest has led to positions as Administrator of the L5 Society and Deputy Executive Director of the National Space Society. He is currently occupied as the Development Director for Action on Smoking and Health.

**ALAN S. BRICKLIN** received his M.D. from Jefferson Medical College in Philadelphia. For 14 years he has practiced Pathology in the Los Angeles area. He is interested in the biologic evolution of humans and in the possible variations of life forms on other worlds.

**RICK COOK** is a science fiction, fantasy, and science fact writer from Phoenix, Arizona. Published works include the novels Wizard's Bane, Wizardry Compiled, and Limbo System.

**PHILIP R. DeVITA** has taught anthropology at SUNY, Plattsburgh, New York. His travels have taken him to such far-flung destinations as Baffin Island, the Galapagos Archipelago, and Australia. His works in progress includes several chapters in THE HUMBLE ANTHROPOLOGIST, Volumes I and II, which he has edited.

**JAN ENGLISH-LUECK** received her Ph.D. from UC Santa Barbara studying under Paul Bohannan. She has worked with John Platt on other projects, most recently doing field work in mainland China. She is currently teaching at CSU Fresno. Her primary areas of interest are social movements and change with emphasis on American culture.

**JAMES J. FUNARO**, the founder of CONTACT, is an instructor of anthropology at Cabrillo College, Aptos, CA, where he teaches courses in futures studies that use science fact and science fiction as tools in building perspectives and exploring possibilities. He is a published poet. A recent scientific publication is "Anthropologists as Culture Designers" in Case for Mars III.

**JOEL HAGEN** has an academic background in anthropology. He is an active member of the International Association of Astronomical Artists, and is known for realistic sculptures of hypothetical alien skulls. He is a four-time recipient of the World Science Fiction Convention Award for 3-dimensional art, and has had his work written about in Smithsonian Magazine and featured in the NASA/PBS documentary "Visions of Other Worlds".

**ALBERT A. HARRISON** is a professor of psychology at the University of California, Davis. For 10 years, his primary research interest has been the psychological and social aspects of space flight. Al organized the recent NASA-NSF conference entitled The Human Experience in Antarctica: Application to Life in Space, and chaired the Human Factors sessions at Case for Mars III. He has published the book Living Aloft: Human Requirements for Extended Spaceflight, and most recently completed a section on human factors for the Martin Marietta manned Mars mission study.

**BARBARA JOANS**, Anthropologist, is head of the Anthropology Program at Merritt College in Oakland, CA. She is also Director of the Merritt Museum of Anthropology. She has been an urban consultant for the City of San Francisco Planning Department and an Oakland job developer. Dr. Joans has long been interested in fantasy and science fiction. She says, "Living in New York City...Santa Cruz, and San Francisco can bring out the Alien in anyone."

**PHIL KLASS** writes science fiction under the pen name of William Tenn. His stories and articles have been widely anthologized - at one time Ballantine Books issued 5 volumes of his stories at once, in uniform editions - a tribute unmatched in this genre. Klass now devotes his time to a professorship at Pennsylvania State University.

**PETER L. MANLY** is an astromomer and technical writer with a degree in physics. His prime interests are in occultation photometry, telescope design and eclipse chasing. He spent a decade in the military and another in the aerospace industry designing computers, communications systems and sensors. He has also been published in science fiction and fantasy.

**MARY MASON** has a bachelor's degree in psychology from CSUS. She has taught classes in brain dissection at the college level and at SF Conventions. She has done research for numerous writers on psychopharmacology, neurology, and related topics. She currently lives in Sacramento and is working on a book and other projects with her husband Stephen Goldin.

**ROBERT McMAHON** has a Ph.D. from UCLA with a special interst in psychological-biological-medical/engineering systems. His special skill has been the contribution of basic value systems for large scale human endeavors. He is a Fellow of the Society of Applied Anthropology, and is author of countless proposals, reports and studies.

**JIM MOORE** has turned an interest in diving and marine biology, 10 months as a research assistant for Jane Goodall, an interest in human evolution, and graduate work in anthropology into a fair preadaptation for thinking about constraints on ET behavior and social organization.

**JONATHAN POST** is internationally known as a scientist, aerospace engineer, author, publisher, and speaker. He currently works with advanced software engineering, artificial intelligence, and manned lunar and planetary mission planning. He has been Mission Planning Engineer for the Voyager 2 encounter with Uranus, the Galileo spacecraft to Jupiter, the Magellan spacecraft to Venus, the Space Shuttle, and Space Station. He is the winner of the Rhysling Award for Best Science Fiction Poem.

**DOUGLAS RAYBECK** is a psychological anthropologist with a number of professional publications to his credit. He is also an avid science fiction fan. He currently teaches anthropology at Hamilton College, Clinton, New York.

**REED D. RINER** is a pioneer in a social-scientific futures research. He edited and published Cultural Futures Research for 5 years. He also organized and chaired 7 symposia and 2 extended simulation exercises on future research. He teaches anthropology at Northern Arizona University in Flagstaff.

**RMNAS** (Ruthmarie Arguello-Sheehan) is a master storyteller, performer, speaker and teacher. She has been an invited Artist-in-Residence in Alaska, Middle East, Africa and China.

**SANDY STONE** is currently a graduate student at UC Santa Cruz, where her areas of specialization are social studies of science and feminist theory. She has a background in computer science, film, sound recording, and science fiction. Her first novel, KTAHMET, will be published by DAW Books in 1991.

**CHUCK STOVITZ** is an attorney and former associate professor of law. He spent over a year in Antarctica and received the Antarctic Service Medal. Currently, Chuck edits the Astrolaw Journal, and is a member of the Foreign Committee on Space Law, International Law Association, and serves as a consultant to the National Science Foundation.

**WILLIAM "CHIP" STREET** has been art director of CONTACT for several years and is known for his depictions of the "aliens" of Cultures of the Imagination. He received a degree in art from University of California, Santa Cruz. A freelance artist, he also specializes in local college education workshops.

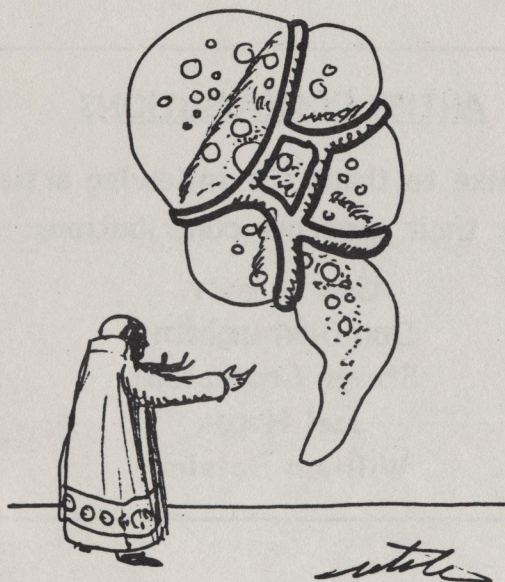


**ALLEN TOUGH** is a professor at Ontario Institute for Studies in Education and the University of Ontario, teaching graduate courses on potential futures and their implications. He is the author of five books, and is currently working on one entitled The Long-Term Future of Human Civilization, which includes a chapter on the long-term effects of contact with an alien civilization.

**LAURENCE J. VICTOR** describes himself as an Extra Temporal, leader of Expeditions in Time. He is a designer of Learners for Quality Education and Expedition SEMEN. He also teaches psychology, futurism and learning to study at Pima Community College in Tucson, AZ.

**MARY CLARE WOODSON** received her degree in the Exotic Animal Training and Management program at Moorpark in 1981. She has worked with various species of birds and primates and, for the past seven years, has been a marine mammal trainer, specializing in dolphins, killer whales and seals.

**THOMAS L. ZANE** is interested in how crews can be trained for maximum productivity on long-duration space flights. He holds a Ph.D. in psychology with a specialty in experimental psychology. He recently worked on a NASA project concerning the effect of isolation and confinement on work productivity and socialization at John Hopkins School of Medicine.



## PRODUCERS OF CONTACT VII, 1990

### CASFS, INC.

Douglas Cosper, Coordinator  
Bruce Farr, Hotel Liaison etc.  
Terri Birmingham, Hospitality  
Eillen Phillips, Registration

### CONTACT, INC.

Jim Funaro, Symposia Coordinator  
Barbara Joans, Coordinator, COTI  
Greg Barr, Coordinator, Bateson Project

...along with CONTACT and the Central Arizona Speculative Fiction Society, Inc., a 501 (c) 3 non-profit corporation

special thanks to the following: Margaret "leave 'em laughing" Grady for assistance with publications; Matt Frederick for the loan of a lazer printer; Kim and Julie for letting us live (if you call this living).

### ARTIST CONTRIBUTIONS

We'd like to thank the following artists  
for their generous contributions:

George Barr  
Don Birmingham  
Steven Crompton  
Joel Hagen  
William Rotsler



